

MEDICAL EMERGENCY

Attend to student's needs

Notify lecturer or staff of situation

Staff decide 1st aid officer required

1st aid officer attends and escalates as required

Call ambulance as required

For medical emergency complete either:
WHS-F01 Incident Report
Workers Compensation Claim

EVACUATION EMERGENCY

Evacuation Alarm is sounded

Stop what you are doing.
Do not collect any belongings.
Leave through your nearest exit.

Evacuate campus to Evacuation
Assembly Point

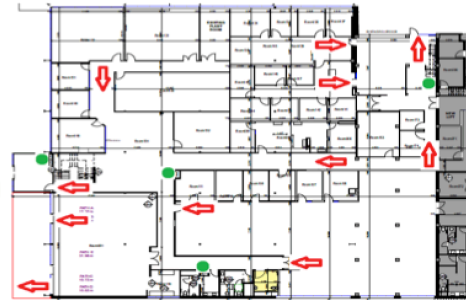
Obey all instructions from
Evacuation Wardens

Notify chief warden of any missing
people

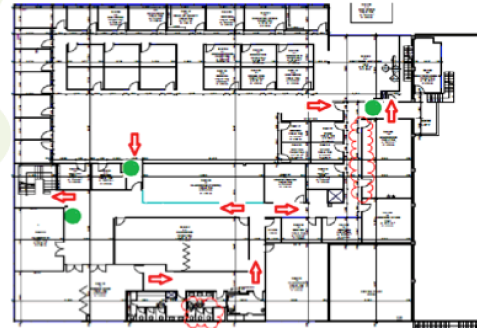
Remain at Evacuation Assembly Point
until further instructions are given

EMERGENCY EXITS

Ground Floor Plan



First Floor Plan



EXCELSIA
COLLEGE
Sydney - Australia

CRICOS Code 02664K
Issue 8, August 2015

